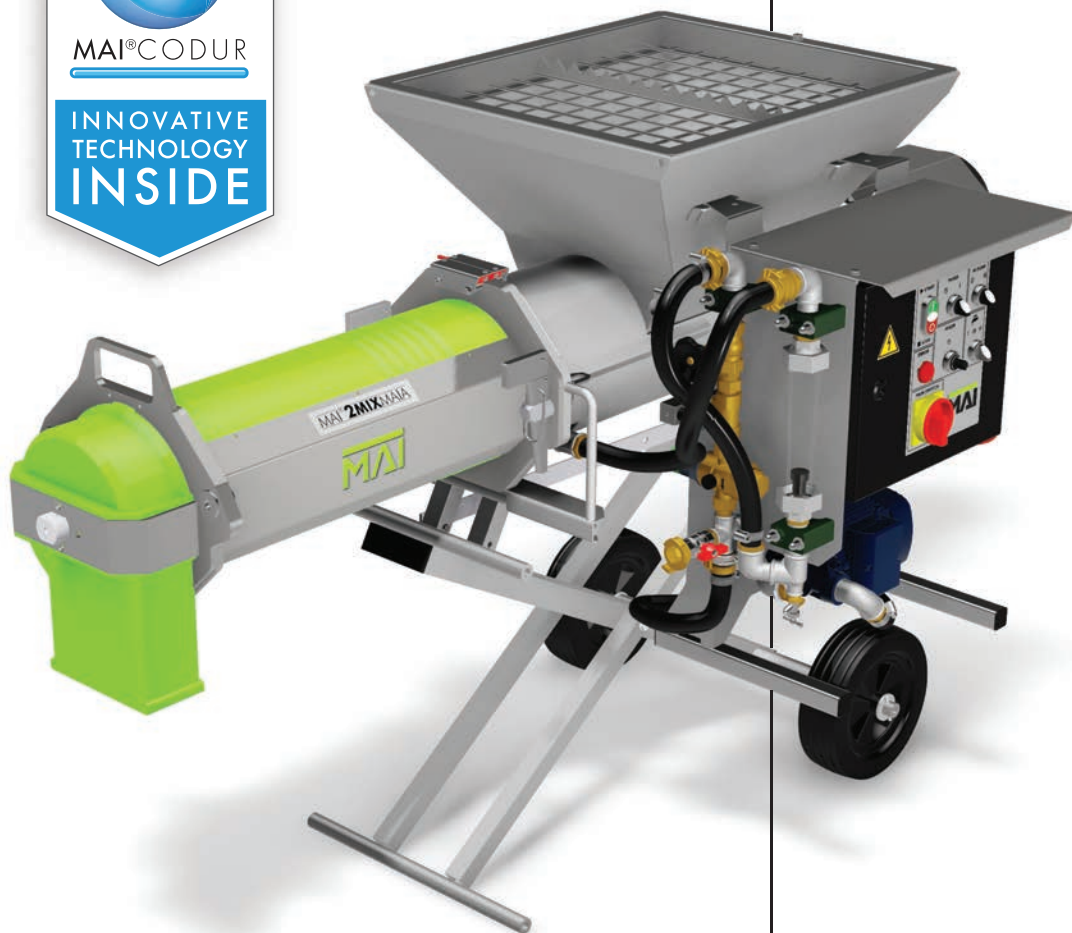


MAI®**2MIX** MAIA Mobil



THE INDIVIDUAL IS OUR MAIN CONCERN

... A STEP AHEAD

## MAI®2MIX MAIA Mobil

### TIME IS MONEY

Reduce your maintenance and service costs thanks to the quick and easy dismantling of the main components. Benefit from our continuous mixer's long service life, made possible by the use of high-quality steel parts and the most modern plastic components available. The robust construction can withstand even tough continuous operation.

### EASY CLEANING

THE MAI® CODUR mixing zone with self-cleaning function will save you costs and bring you unbeatable benefits for mixer operation.

### THE ADVANTAGES AT A GLANCE

- Excellent mixture quality which will satisfy the greatest of expectations.
  - Long service life thanks to the use of three-dimensionally crosslinked plastics.
- Modular construction guarantees suitability for all performance ranges.



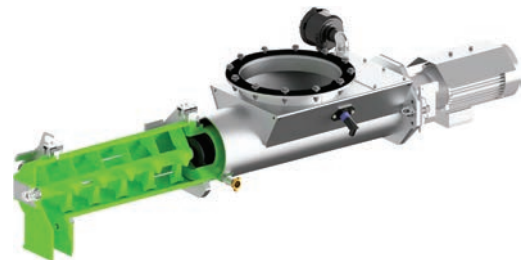
MAI 2Mix MAIA & MAI 2Pump Taurus Configuration



MAI 2Mix MAIA - Silo Configuration

### TECHNICAL DATA

Operating Voltage	: 400V/3/N/PE/50Hz
Nominal Power	: 5.5kW, 4kW
Fusing	: 3 x 25A
Feed Capacity	: 40L/min
Max Grain Size	: 5mm
Dimension LxWxH	: 1900 x 860 x 1100mm
Filling Height	: 1100mm
Total Weight	: approx. 200kg



MAI Maia Mobil with MAI 2Pump Taurus sold separately



Info@acme.com.sg

ACME EQUIPMENT PTE LTD

11 Buroh Street, Singapore 627550

Tel: + 65 6862 2332 Fax: +65 6862 2331

Co. Regn: 198104895M GST Regn: M2-0058222-5

Facebook.com/AcmeEquipment