

REED



Shotcrete & Concrete Pump • Guniting Machine General Catalogue



ACME EQUIPMENT • CONTACT US NOW FOR A QUOTE!

Tel: +65 6862 2332 • www.acme.com.sg • info@acme.com.sg

REED

A Series "Rockmaster" Pumps

A30/A30HP/A40HP Trailer Mounted Concrete Pumps



"Rockmaster":

Premium pump in its class, built with the same leading edge engineering as REED's top-of-the line pumps. The Rockmaster delivers outstanding long term value for the money by virtue of its reliability, toughness, ease of use, durability and pumping power.

The Rockmaster is powered by a 82 hp (61 kW) continuous duty diesel engine. This best-in-class power is the basis for the pump's versatility. It can be used to pump rough concrete mixes as well as shotcrete. (A40HP is recommended for higher pressure applications).

The Rockmaster features a simple "Open-Loop" hydraulic system and a large fuel tank.

Standard Features:

- Powerful 82 hp (61 kW) Perkins diesel engine (continuous duty)
- Variable Displacement Piston Hydraulic Pump (A30HP and A40HP models)
- Gear Pump (A30 model)
- Heavy-duty "S" Valve
- Lightweight , but Solid
- Chromed concrete cylinders for long service life
- Inexpensive and Easy-Change Polyurethane Piston Cups
- High-strength frame design
- Only 4 hydraulic hose groups (8 hoses total)
- Adjustable tongue jack
- Fuel Filters (Pre-filter with water separator and spin off primary filter)

Applications:

- **Big Rock**
- **Grout**
- **Pea Gravel**
- **Shotcrete**
- **Slope Stabilization**
- **Ponds & Spas**
- **Slabs**
- **Rockscaping**
- **Mines**
- **Backfill**
- **Foundations**
- **Pressure Grouting**

A Series "Rockmaster" Pumps

A30/A30HP/A40HP Trailer Mounted Concrete Pumps

Additional Standard Features:

- Reversibility at any point in the stroke
- Variable volume output
- Weatherproof NEMA 4 control panel
- High capacity hydraulic oil cooler
- Highway rated axle
- Electric brakes
- Adjustable pintle hitch or ball coupler
- Hour meter
- Splined shaft on "S" Valve
- Highest standard horsepower and concrete pressure in class

Optional Features:

- Hopper Agitator (A40HP only)
- Radio remote control
- 7-function hardwire cable remote control (On/Off/Reverse/E-stop/Horn-reset/RPM control/Stroke Change)
- Centralized Lube Block or Auto Lube
- Hopper Vibrator
- Electric Drive
- Skid Mounting
- Truck Mounting
- Super Heavy-Duty Axle (7000 lb rating)
- Hydraulic Surge Brakes
- Custom Paint, Chrome Wheels, Dual Axles
- Mixer Attachment (Hydraulic Drive) (mix material, lift, dump, pump)
- Hydraulic Surge Brakes
- Screw-type Outriggers (manual, adjustable)
- CE Certification Kit

MODEL		A30	A30HP	A40HP
Concrete Output	yd ³ /hr	30	30	40
	m ³ /hr	23	23	31
Concrete Pressure	psi	903	903	1172
	bar	62	62	81
Horizontal Pumping Distance *	ft	900*	900*	975*
	m	274*	274*	297*
Vertical Pumping Distance *	ft	350*	350*	400*
	m	107*	107*	122*
Perkins Diesel Motor	hp	82	82	82
	kW	61	61	61
Main Hydraulic Pump		Gear Pump	80cc Variable Displacement	100cc Variable Displacement
Concrete Cylinder Diameter	in	5"	5"	6"
	mm	127	127	152
Stroke Length	in	30"	30"	30"
	mm	762	762	762
Maximum Aggregate Size	in	1"	1"	1.5"
	mm	25	25	38
Hopper Height	in	40	40	40
	mm	1016	1016	1016
Hydraulic Oil Capacity	gal	40	40	40
	liters	151	151	151
Fuel Capacity	gal	29	29	29
	liters	110	110	110
Outlet Size	in	5	5	5
	mm	127	127	127
Dimensions	Length	Width	Height	
	in 160	61	64	
	mm 4064	1549	1626	
Weight (Approx.)	lbs	4600	4600	4760
	kg	2087	2087	2159

* Theoretical distances and performance shown above are estimated using standard industry methods. Actual performance will vary depending on the concrete pump (concrete pressure, horsepower), material (mix design, slump, local sand and rock characteristics), and delivery system (pipeline diameter, type (steel or hose) and reductions/bends). Maximum output, pressure, and distance cannot be reached simultaneously. Specifications subject to change without prior notice.



REED is able to build a pump to suit your specific requirements



B Series

B20/B20HP/B50/B50HP/B50HPS/B60/B70/B70HPS Trailer Mounted Concrete Pumps



B Series:

Heavy-duty, Sturdy, Powerful Pumps featuring "Open-Loop" hydraulic systems and variable displacement hydraulic pumps.

All **B Series Pumps** now feature **Powerful Cummins Diesel Engines** that offer more torque, run at lower RPM's (quieter+longer life) and are more efficient than all competitors (110 or 130 hp (82 or 97 kW)).

REED pumps use large, high flow hydraulic pumps for the best performance and pump life.

The simple design of the **B Series pumps** makes them extremely easy to trouble-shoot and service.

A variety of output and pressure ranges makes the **B Series** top performers for a variety of applications.

Standard Features:

- **Inexpensive Polyurethane Piston Cups (vs. expensive rubber pistons)**
- Heavy-duty "S" Valve for quick, smooth, wear-free pumping
- Low hopper height allows for easy cleanout and loading
- Chromed concrete cylinders for long service life
- Highest-strength frame design (most reinforced frame, hopper and pumping train in the industry)
- Integrated toolbox by towing hitch
- Highest commonality of hydraulic hoses

Common Applications:

- **Shotcrete**
- **Vertical Pumping**
- **Foundations/Flatwork**
- **Pool Construction**
- **Refractory Spraying**
- **Slabs & Footers**
- **Grouting**
- **Rockscaping**
- **Mine & Tunnel Support**
- **Lightweight and Foamed**
- **Geotechnical Support**

B Series

B20/B20HP/B50/B50HP/B50HPS/B60/B70/B70HPS Trailer Mounted Concrete Pumps

Additional Features:

- Super heavy-duty steel frame
- Reversibility at any point in the stroke
- Fully-variable volume output
- 9000 lb (4083 kg) highway rated axle (all but B20 and B20HP Model)
- Electric brakes
- 2 heavy-duty outriggers
- Adjustable pintle hitch (2-5/16" ball hitch is optional)
- Forged steel pistons with urethane cups
- Hard chromed concrete cylinders
- Hour meter/tachometer / stroke counter
- Highest standard concrete pressures in class
- Wide stance for easy towing
- Harsh-Mix Hopper (B70&B70HPS only)

Optional Features:

- Radio remote control (On/Off/ Reverse/E-stop/Horn-reset / Engine RPM/Volume Control)
- 5-function cable remote control
- Hydraulic outriggers
- Hopper agitator (auger std on B70/B70HPS)
- Dual shift cylinders (Standard on B50HPS/B70/B70HPS)
- Vibrator for hopper screen
- Aluminum wheels
- Hydraulic surge brakes
- Chemical additive pump
- Stroke counter on remote control
- Skid mounting
- Electric motor (50, 75, 100hp available)
- Lifting-eye kit
- Auto Lube or Centralized Lube Block
- Hopper extension (increase cap. to 16cf)
- Carbide Wear Parts
- Hydraulically driven water wash-out pump
- Custom Paint
- Tier 4 Diesel

MODEL		B20	B20HP	B50	B50HP	B50HPS	B60	B70	B70HPS
Concrete Output	yd ³ /hr	20	20	50	50	50	60	70	70
	m ³ /hr	15	15	38	38	38	46	54	54
Concrete Pressure	psi	1664	2113	1361	1361	1778	1174	1000	1305
	bar	115	145	94	94	122	81	69	90
Horizontal Pumping Distance *	ft	650*	2200*	1200*	1200*	1570*	950*	750*	1150*
	m	503*	670*	365*	365*	475*	290*	228*	350*
Vertical Pumping Distance *	ft	700*	875*	450*	450*	590*	375*	300*	390*
	m	213*	267*	137*	137*	180*	114*	91*	119*
Cummins Diesel Engine	hp	110	110	110	130	130	110	130	130
	kW	32	82	82	97	97	82	97	97
Main Hydraulic Pump	cc/rev	71	100	140	140	180	140	140	180
Concrete Cylinder Diameter	in	4"	4"	6"	6"	6"	6"	7"	7"
	mm	102	102	152	152	152	152	178	178
Stroke Length	in	36"	36"	36"	36"	42"	36"	36"	42"
	mm	914	914	914	914	1067	914	914	1067
Maximum Aggregate Size in	in	3/4"	3/4"	1 1/2"	1 1/2"	1 1/2"	1 1/2"	1 1/2"	1 1/2"
	mm	19	19	38	38	38	38	38	38
Hopper Capacity	ft ³	10	10	12	12	12	12	14*	14*
	(Standard / Hersh Mix* Hopper ltrs)	283	283	340	340	340	340	400*	400*
Hopper Height	in	42	42	42	42	45	42	45*	45*
	(Standard / Hersh Mix*, Hopper mm)	1067	1067	1067	1067	1143	1067	1143*	1143*
Hydraulic Oil Capacity	gal	52	52	52	52	52	52	52	52
	ltrs	197	197	197	197	197	197	197	197
Fuel Capacity	gal	24	24	24	24	24	24	24	24
	liters	91	91	91	91	91	91	91	91
Outlet Size	in	4	4	5	5	5	5	5	5
	mm	102	102	127	127	127	127	127	127
Dimensions (Approx.)				Length		Width		Height	
				in	170	74	83		
			mm	4318	1879	2108			
Weight (Approx.)	lbs	5980	5980	6580	6580	6875	6750	6980	7125
	kg	2718	2718	2991	2991	3119	3063	3173	3230

* Theoretical distances and performance shown above are estimated using standard industry methods. Actual performance will vary depending on the concrete pump (concrete pressure, horsepower), material (mix design, slump, local sand and rock characteristics), and delivery system (pipeline diameter, type (steel or hose) and reductions/bends). Maximum output, pressure, and distance cannot be reached simultaneously. Specifications subject to change without prior notice.



REED can truck mount, track mount- or skid mount - any concrete pump.



Optional Lift Mixer Attachment



REED

SOVA *Guncrete* GUNITE MACHINE

Air Driven Dry-Mix Shotcrete Machine



Applications:

- Structural Concrete Repair
- Refractory Spraying
- Rockscaping
- Bridge Repair
- Slope Stabilization
- Tunnels and Mine Support
- Pools and Spas
- Channels
- Piers and Sea Walls
- Sewers
- Retaining and Fire Walls
- Dams and Reservoirs

The **SOVA** Gunite Machine provides a steady flow of material which allows uniform hydration and very smooth placement.

The adjustable output of material may be increased without sacrificing the quality of the application. The compact SOVA is capable of spraying through hoses from 1" to 1 1/2" (25 to 38mm) inside diameter.

SOVE (Electric Version) uses an electric motor to rotate the machine's feed bowl. (Air required to convey material)

Made in the U.S.A. with the highest quality components and craftsmanship, REED has offered the most rugged and reliable Gunite Machines on the market for nearly 60 years.

Standard Features:

- Direct Drive 5HP Air Motor (SOVA)
 - Continuous Feed Hopper
 - Bag Breaker Included
 - 2 Blade Material Agitator
 - Direct Drive 3HP Electric Motor (SOVE)
- 3 Phase, 50Hz or 60Hz, 220/230v, 380/400v, 440/460v available

Optional Features:

- Oversized Water Separator
- Automatic Pad Clamp (209 model)
- Dust Suppression System
- Skid Mounting
- Hydraulic Drive

- Sand and Gravel Backfill
- Concrete Pipe Lining
- Ditches



SOVE model above requires 90cfm less compressed air than SOVA

SOVA *Guncrete* GUNITE MACHINE

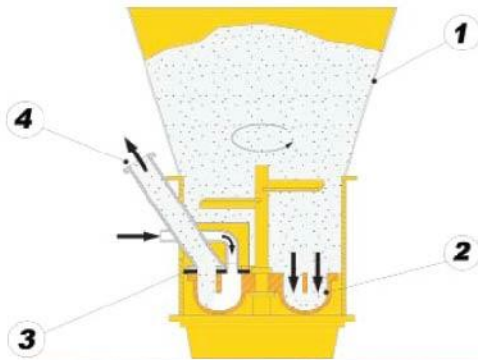
Air Driven Dry-Mix Shotcrete Machine

SOVA CONFIGURATIONS- Small Open Vertical-Feed Air Powered

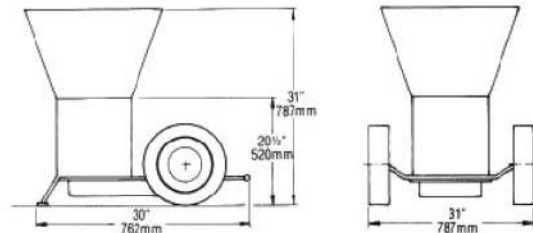
Feed Bowl #Pockets	Hose Size (I.D.)	Maximum Aggregate Size	Air Compressor (Recommended size at 100 psi)	Maximum Output**	Common Applications
1 18	1" (2.5cm)	1/4" (7mm)	210 cfm (6.0m ³ /min)	2yd ³ /hr (1.5m ³ /hr)	Fine, detailed artistic-type work, rockscaping, patch repair
2 18	1 1/4" (3.2cm)	1/4" (7mm)	315-375 cfm (9-11m ³ /min)	4yd ³ /hr (3m ³ /hr)	Refractory spraying, repair work, smooth finish
3 16	1 1/4" (3.2cm)	1/4" (7mm)	315-375 cfm (9-11m ³ /min)	6yd ³ /hr (4.5m ³ /hr)	Refractory spraying, repair work, smooth finish
4 16	1 1/2" (3.8cm)	3/8" (10mm)	315-375 cfm (9-11m ³ /min)	9yd ³ /hr (6.9m ³ /hr)	Refractory spraying, repair work, smooth finish

* Subtract roughly 90 SCFM (2.5M/MIN) from air requirement if SOVE (electric) model is used. Additional air may be required depending on altitude and atmospheric pressure.

Operating Principle:



1. The dry material is fed through the hopper down into the pockets of the rotary feed wheel below.
2. The rotary feed wheel, driven by a heavy-duty oil bath gear drive, rotates the mix under the conveying air inlet and material outlet.
3. With the introduction of compressed air, the mix is evacuated from the feed wheel pockets, then traveling through the outlet and into the hoses.
4. The dry mix material is then conveyed in suspension through hoses to the nozzle, where water is introduced and the water and dry material mix.



SOVA Dimensions Shown Above (SOVE Dimensions vary)

MODEL	SOVA /SOVE		
Maximum Horizontal Conveying Distance	ft	1000+	
	m	305+	
Maximum Vertical Conveying Distance	ft	300+	
	m	91+	
Drive System	SOVA 5 hp Air Motor, Direct Spur Gear Drive SOVE 3 hp Electric Motor, Direct Spur Gear Drive		
Hopper Style	- Continuous Feed, Flat Refractory-style		
Gross Weight (Approx.):	SOVA	SOVE	
	lb	455	660
	kg	206	300

Maximum theoretical performance shown above. Actual performance will vary depending on slump, mix design and delivery line diameter. Specifications subject to change without prior notice.

Genuine REED Quality

• A series • B series • SOVA •



ACME EQUIPMENT PTE LTD

11 Buroh Street, Singapore 627550 · Tel: +65 6862 2332 · www.acme.com.sg · info@acme.com.sg

The Prime Source for Concrete & Construction Equipment