

#AcmeEduGuides



ChemGrout[®]

CG500

Hydraulic Valve
Seals Replacement

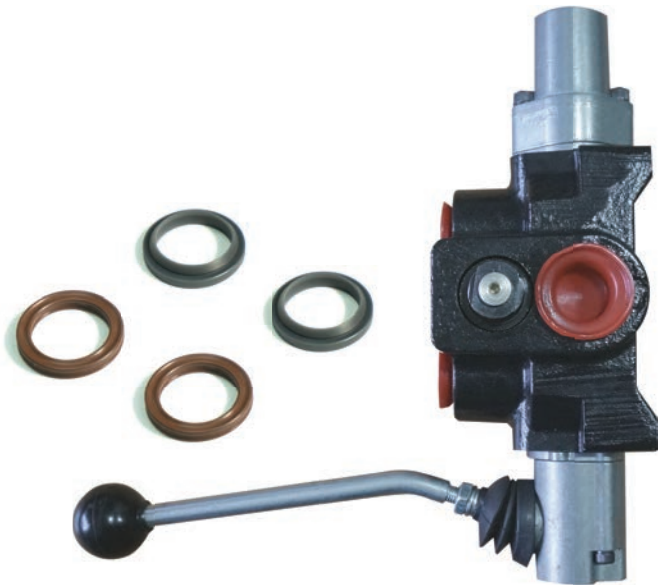
Before Replacement

Preparation

1. If oil leak is spotted around the valve, a seal replacement is recommended.
2. There are 4 seals :

SDCF-K

- 2 Dust Caps / Outer Seals
- 2 X-Rings / Inner Seals

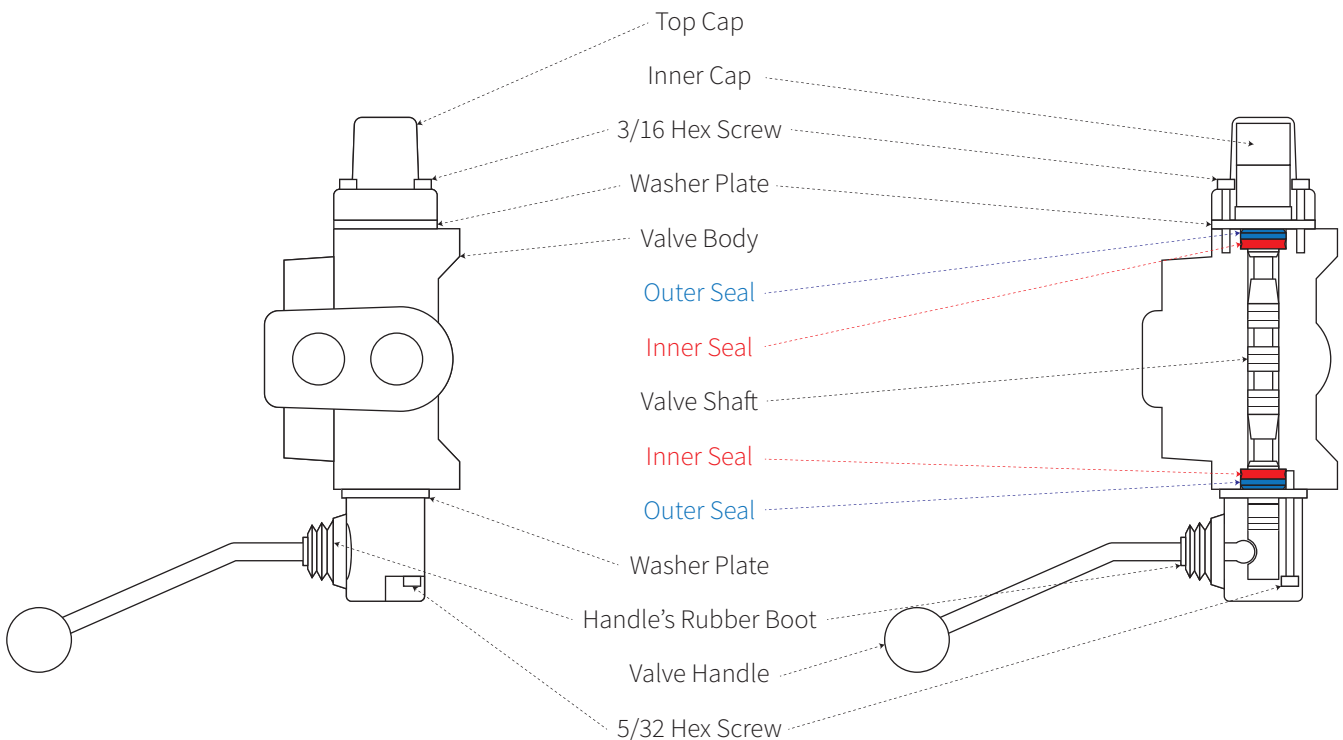


Tools

1. Allen Key no. 3/16
2. Allen Key no. 5/32
3. Rubber Hammer
4. Flat-head Screwdriver for seal seating

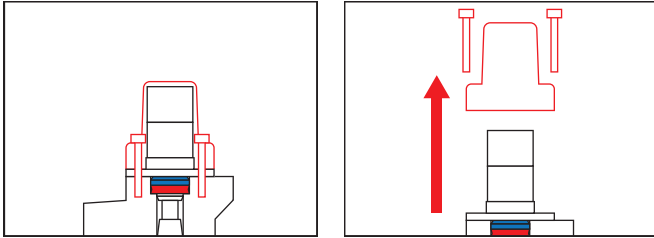
DANGER
Only disassemble the valve when the hydraulic oil have cooled down.

Parts Breakdown

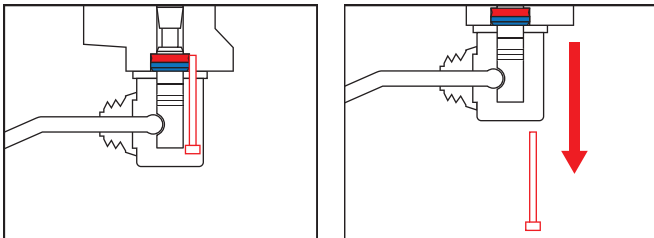


Disassembly

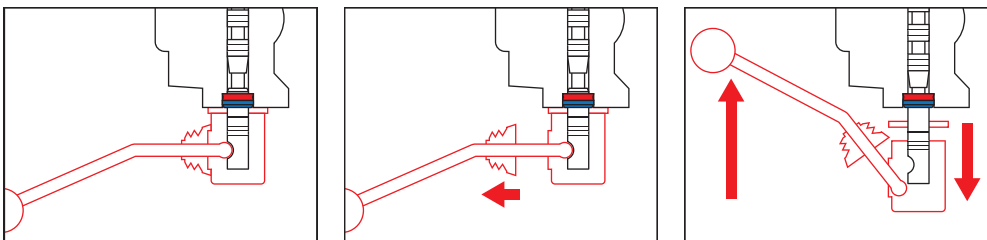
1. Remove the *top cap* and screws (2) with Allen Key no. 3/16.



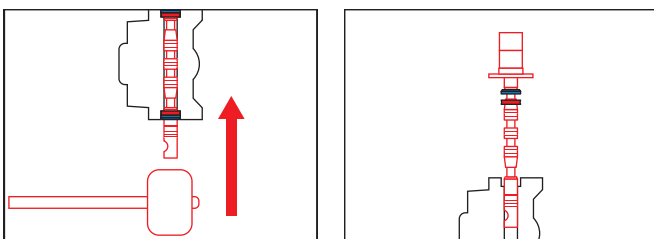
2. Remove the *bottom cap's* screws (2) with Allen Key no. 5/32.



3. Pulls the *rubber boot* off and push the *handle* upward to release the *bottom cap* and *washer plate*.



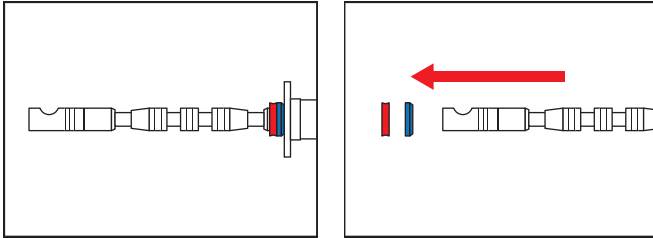
4. Push or knock the bottom of the *shaft* upward with a rubber hammer to remove it from the *valve body*.



Caution

Do not pull the *shaft* out of the *valve body* by grabbing the *inner cap*. The *inner cap* contains parts that may be lost if it comes loose.

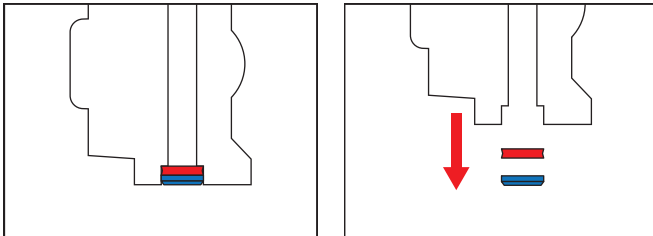
5. Remove the top *outer & inner seals* from the *shaft*.



Caution

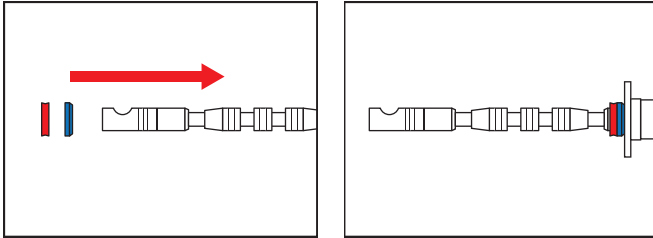
The edges on the *shaft* are sharp. Wear a glove while working on the replacement to prevent injury.

6. Remove the bottom *outer & inner seals* from the *valve body*.

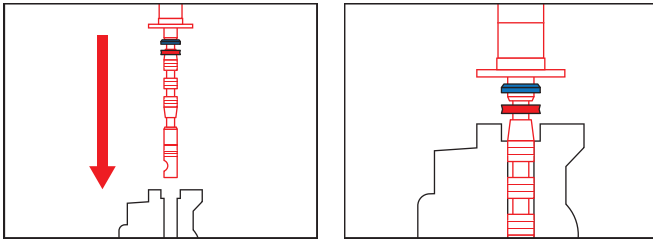


Assembly

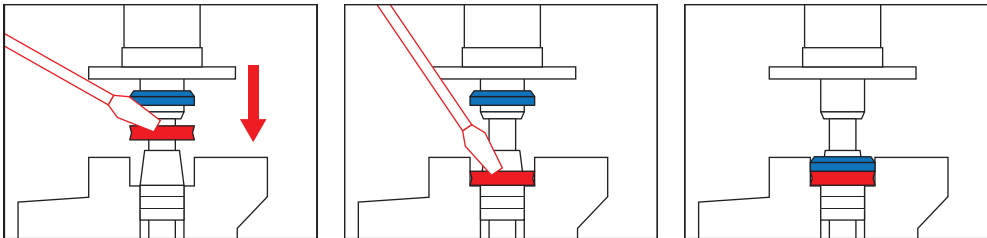
1. Insert the top *outer & inner seals* onto the *shaft*.



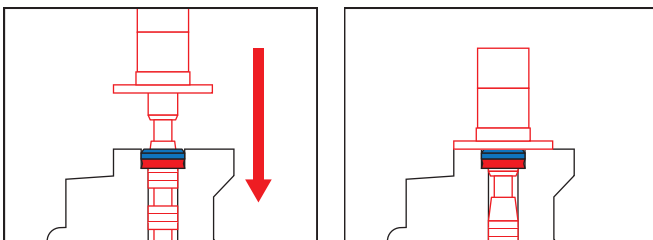
2. Insert the *shaft* halfway through the *valve body*.



3. Push the *inner & outer seals* completely into the seal groove with a flat-head screwdriver.



4. Push the *shaft* into the *valve body* completely.



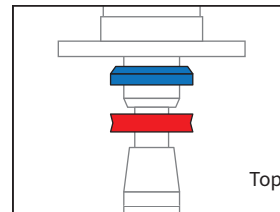
Caution

Notice the orientation and order of the seals. The *inner seal* (X-Ring) sits deeper in the *valve body*. The *outer seal* (Dust Cap) has a tapered end facing outward of the *valve body*.

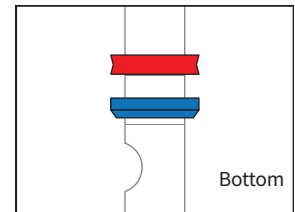


Inner Seal
(X-Ring)

Outer Seal
(Dust Cap)



Top

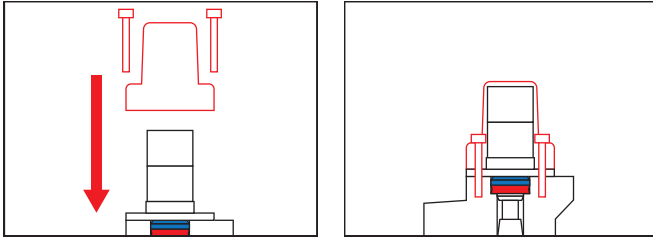


Bottom

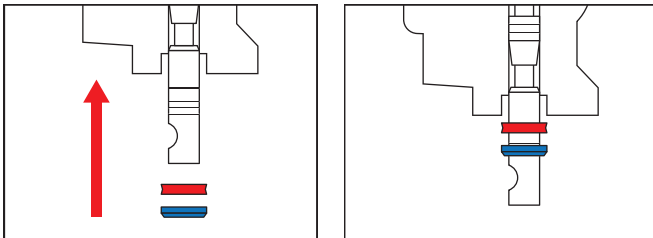
Caution

The seals must be inserted independently from the shaft to prevent installation damage.

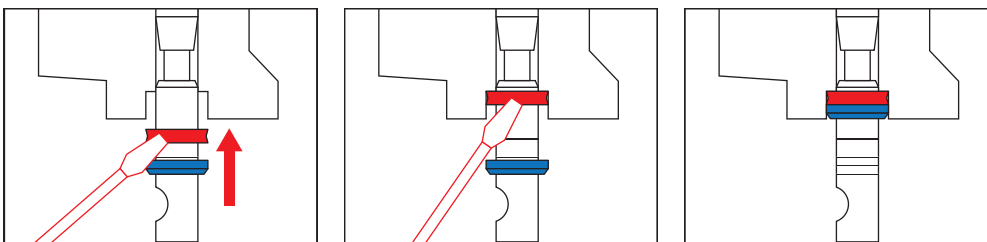
5. Install the *top cap* with an Allen Key no. 3/16 and hex screws (2).



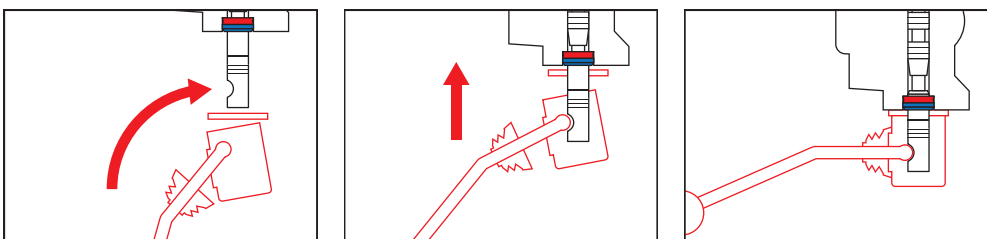
6. Insert the bottom *inner & outer seals* onto the *shaft*.



7. Push the *inner & outer seals* completely into the seal groove with a flat-head screwdriver.



8. Insert the *bottom cap* and *washer plate* by connecting the ball joint of the *handle* into the *shaft* with a “hooking” motion. Reseat the *rubber boot*.



9. Secure the *bottom cap* with an Allen Key no. 5/32 and hex screws (2).

