

MAI® **2PUMP** PICTOR



THE INDIVIDUAL IS OUR MAIN CONCERN

HIGH PERFORMANCE IN COMPACT FORM

MAI® 2PUMP PICTOR

INNOVATIVE YET ENDURING

Innovation and endurance are not mutually exclusive. This compact feed pump is designed for spraying, pumping, injecting and filling liquid and paste-like compounds.

HIGH PERFORMANCE & FEATURES

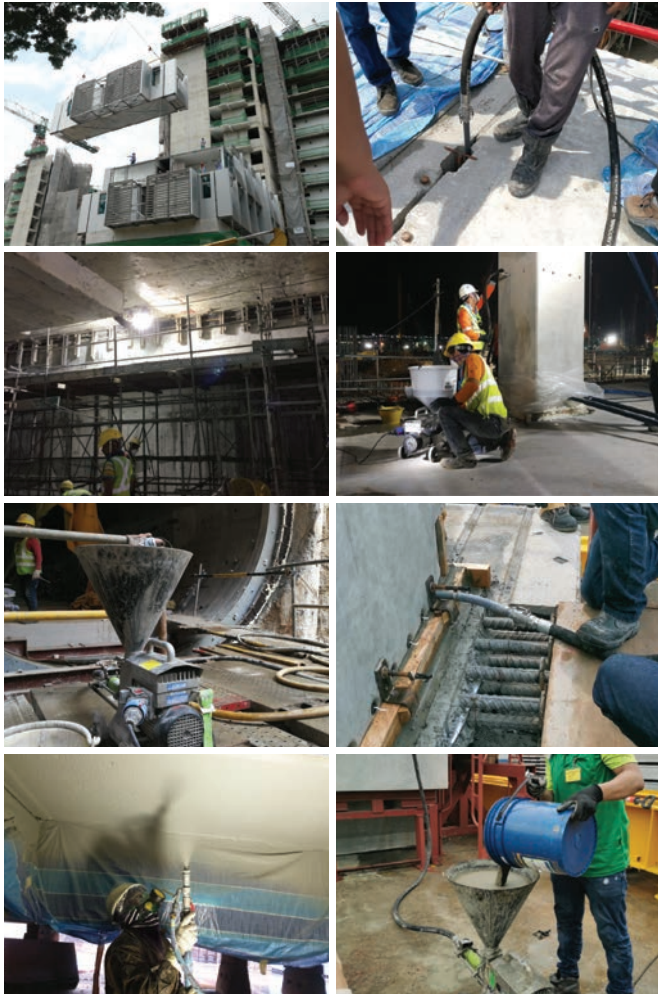
This lighting-current-operated unit is a compact powerhouse. At 1.5kW, 20 bar of working pressure can be achieved as well as hose length up to 30m. It also features a smoothly adjustable output of 0.6 to 15.0 litres per minute.

THE ADVANTAGES AT A GLANCE

- Wide range of application (suitable for renovation projects)
- 230V single-phase motor (available at any construction site)
 - Rust-free thanks to its plastic and stainless steel design
 - Easy to transport (fits in any compact car)
 - Brilliantly easy to operate and clean

APPLICATIONS

Pressure grouting, spray-on waterproofing agents, fire protection mortar, spray finishing coat, PPVC grouting application (Prefabricated Prefinished Volumetric Construction), synthetic resin, and mineral render up to 2mm.



TECHNICAL DATA

Operating Voltage :	230V/1/N/PE/50Hz
Nominal Power :	1.5kW
Fusing :	16 A
Delivery Rate :	
Worm Pump 40LL OS :	2.5 to 15.0 L/min infinitely adjustable
Worm Pump 24L OS :	1.5 to 9.5 L/min infinitely adjustable
Worm Pump 10L OS :	0.6 to 4.0 L/min infinitely adjustable
L x W x H :	75 x 34 x 43 cm
Filling Height :	75 cm
Total Weight :	33 kg



ACME EQUIPMENT PTE LTD
11 Buroh Street, Singapore 627550
Tel: + 65 68622332 Fax: +65 6862 2331
Co. Regn: 198104895M GST Regn: M2-0058222-5

Info@acme.com.sg www.acme.com.sg Facebook.com/AcmeEquipment

The Prime Source for Concrete & Construction Equipment.