

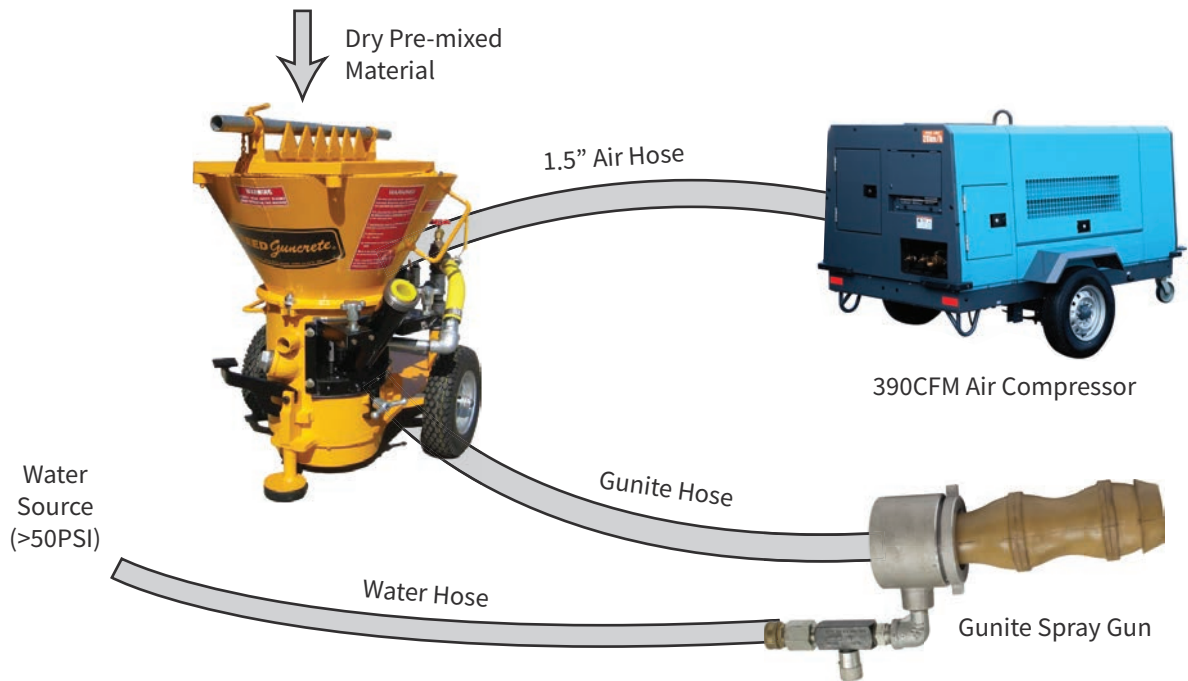


REED SOVA Quick User Guide

Preparation

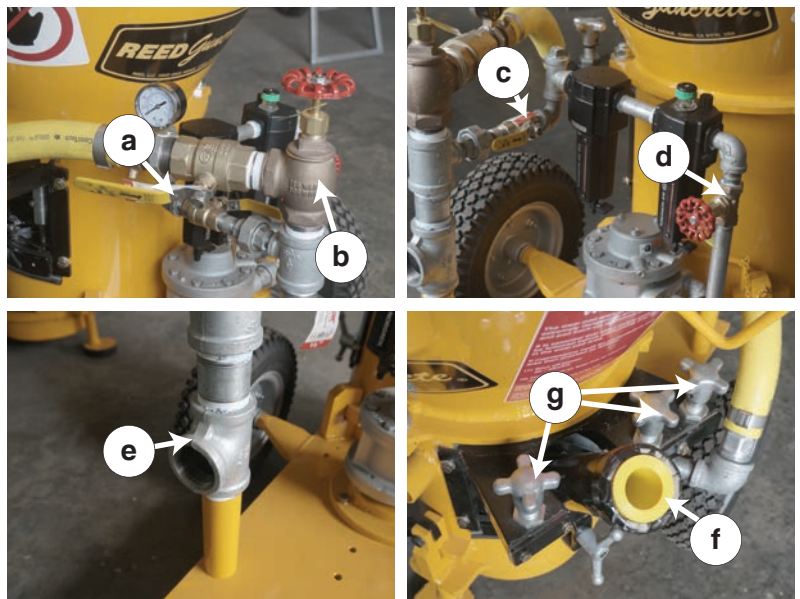
Air Hose	min. internal diameter of 1.5"
Air Compressor	min. 390CFM
Water Source	min. water pressure of 50PSI

Setup



Control

- a. Material Shut-off Valve
- b. Material Throttle
- c. Motor Shut-off Valve
- d. Motor Throttle
- e. Motor & Spray Air Intake
- f. Material Outlet (Gooseneck)
- g. Adjustment Knobs



Operation

Turning On

1. Connect gunite hose to gooseneck.
2. Connect spray nozzle to gunite hose.
3. Connect air hose to nozzle's water intake
4. Open nozzle's shut-off valve, slowly open and adjust water throttle as desired.
5. Open material shut-off valve, slowly open and adjust material throttle as desired.
6. Open motor shut-off valve, slowly open and adjust motor throttle as desired.
7. Add dry material into hopper.
8. Maintain spray distance of 1.5m and in a circular motion.

Turning Off

1. Turn off motor shut-off valve.
2. When hose is clear of material, turn off material shut-off valve.

Maintenance

1. Dismantle the machine in order of hopper, body housing, and feedbowl.
2. Clean the machine with a brush or air gun, DO NOT use any water or cleaning agent.
3. Lubricate the top of the feedbowl with oil.
4. Reassemble the machine.
5. Apply grease on greasing point (At the side of the pad housing).
6. Keep machine in a dry store room.

Tips

If there are leaks around the gooseneck, tighten adjustment knobs slightly or check the rubberpad for wears & tears.

If there are leaks underneath the machine, check if the felt seal is seated properly or for wears & tears.

Tips

If the feedbowl is not moving or very slowly, loosen the adjustment knobs slightly.

Tips

Throttle can be left as it when turning off, so there is no need to re-adjust during the next work session.

Caution

Only the spray gun can be cleaned with water.

