

MAI<sup>®</sup>2PUMPICTOR



THE INDIVIDUAL IS OUR MAIN CONCERN

## HIGH PERFORMANCE IN COMPACT FORM

# MAI<sup>®</sup>2PUMPICTOR

### INNOVATIVE YET ENDURING

Innovation and endurance are not opposites. This compact feed pump is designed for spraying, pumping, injecting and filling liquid and paste-like compounds.

### EXTREME PERFORMANCE

This compact, lighting-current-operated unit is a real powerhouse. At 1.5 kW and with a smoothly adjustable output of 0.6 to 15.0 litres per minutes, working pressure up to 20 bar and hose lengths of up to 30m can be achieved.

### THE ADVANTAGES AT A GLANCE

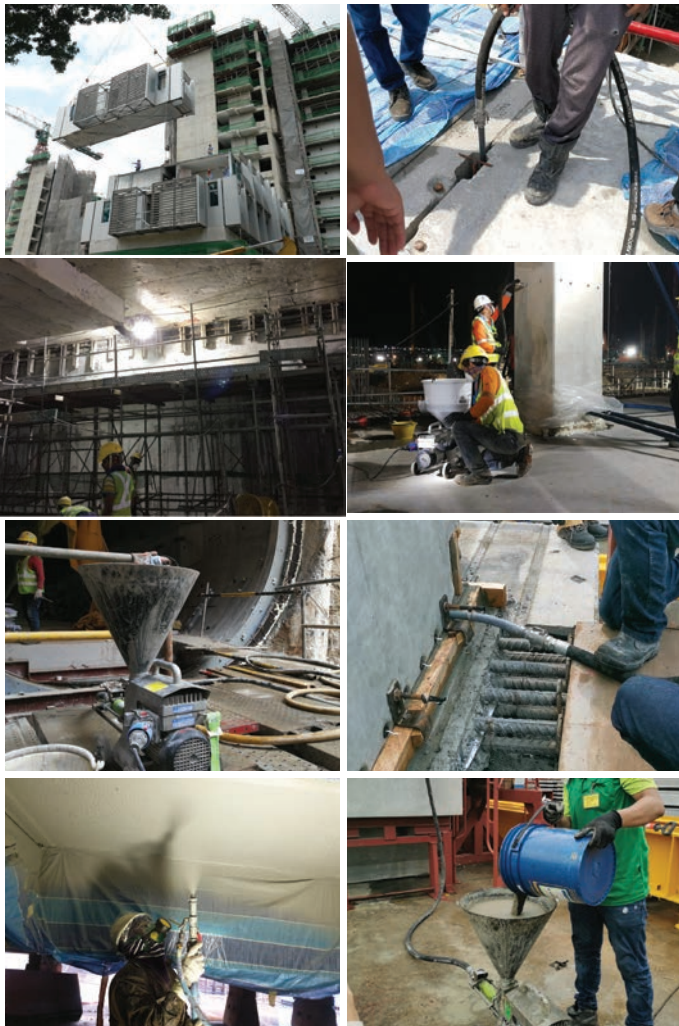
- Wide range of applications (the optimal device for renovation projects)
  - 230V single-phase lighting current available at any construction site
- Guaranteed to be rust-free thanks to its plastic and stainless steel design
  - Easy to transport (fits in any compact car)
  - Brilliantly easy to operate and clean

### APPLICATIONS

Pressure grouting, spray-on waterproofing agents, fire protection mortar, spray finishing coat, PPVC grouting applications (prefabricated prefinished volumetric construction), synthetic resin and mineral render up to 2mm.

### TECHNICAL DATA

Operating voltage:	230V/1/N/PE/50Hz
Nominal power:	1,5 kW
Fusing:	16 A
Delivery rate:	
Worm pump 40LL OS:	2,5 to 15,0 l/min infinitely adjustable
Worm pump 24L OS:	1,5 to 9,5 l/min infinitely adjustable
Worm pump 10L OS:	0,6 to 4,0 l/min infinitely adjustable
L x W x H:	75 x 34 x 43 cm
Filling height:	75 cm
Total weight:	33 kg



ACME EQUIPMENT PTE LTD  
11 Buroh Street, Singapore 627550  
Tel: + 65 68622332 Fax: +65 6862 2331  
Co. Regn: 198104895M GST Regn: M2-0058222-5

[Info@acme.com.sg](mailto:Info@acme.com.sg) [www.acme.com.sg](http://www.acme.com.sg) [Facebook.com/AcmeEquipment](https://www.facebook.com/AcmeEquipment)

*The Prime Source for Concrete & Construction Equipment.*