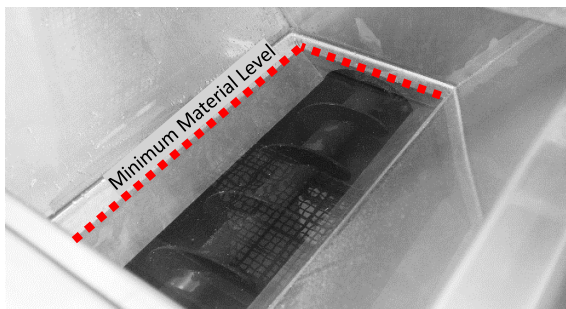




Preparation

1. Pour water into the hopper.
2. Connect hose to the coupling.
3. Turn on the machine and wait for the water to be pumped out of the hose. (Pay attention to the water level in the hopper. Ensure that it does not fall below the minimum material level, which covers the entire screw)



4. Stop the machine once the water comes out of the hose.

Mixer

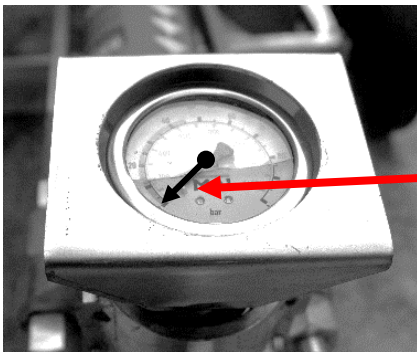
1. Start the mixer.
(**DO NOT** load the material when the mixer is off, otherwise the mixer will not start)
2. Once the paddle started moving, add in the dry material.
3. Add water into the dry mix.

Pumping

1. When the material is fully mixed, start to pour by opening the outlet.
2. Start the pump and allow the material to push the remaining water out of the hose.
3. When the material starts to come out of the hose, you can start your work. (**ALWAYS** keep the material above the minimum material level. **DO NOT** dry run the pump, there must be at least water that is in the pump)

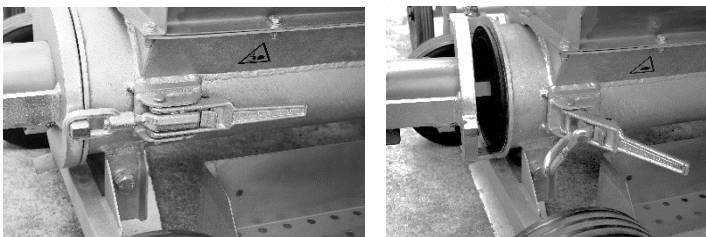
Stopping & Cleaning

1. Stop the pump when the job is finished. (You can pump out the remaining material until the minimum material level)
2. Use water to clean the pump's hopper.
3. Disconnect the hose from the coupling, insert a wet sponge ball into the hose. (**DO NOT** disconnect the hose if there is any pressure shown in the pressure gauge, use the reverse function to reduce the pressure to 0 before any further cleaning work can be made)

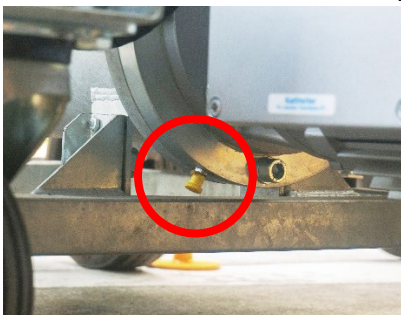


Pressure gauge must show 0 before disconnecting hose

4. Reconnect the hose and start the pump. Wait for the sponge ball to come out of the hose.
5. Repeat step 3 & 4 until the water is clear.
6. Disconnect the hose and release the rotor stator clamp to pour out the remaining water inside the hopper.



7. Inject grease into the pump from the injection point (below the motor, yellow plug) to remove material residue in pump motor.



8. The cleaning is complete.