

**ACME EQUIPMENT PTE LTD**

11 Buroh Street, Singapore 627550

Tel: + 65 68622332 • Fax: +65 6862 2331

Co. Regn: 198104895M • GST Regn: M2-0058222-5

Info@acme.com.sg • www.acme.com.sg • Facebook.com/AcmeEquipment

The Prime Source for Concrete & Construction Equipment.

SOVA *Guncrete* GUNITE MACHINE

Air Driven Dry-Mix Shotcrete Machine



Applications:

- **Structural Concrete Repair**
- **Refractory Spraying**
- **Rockscaping**
- **Bridge Repair**
- **Slope Stabilization**
- **Tunnels and Mine Support**
- **Pools and Spas**
- **Channels**
- **Piers and Sea Walls**
- **Sewers**
- **Retaining and Fire Walls**
- **Dams and Reservoirs**
- **Sand and Gravel Backfill**
- **Concrete Pipe Lining**
- **Ditches**

The **SOVA** Gunite Machine provides a steady flow of material which allows uniform hydration and very smooth placement.

The adjustable output of material may be increased without sacrificing the quality of the application. The compact SOVA is capable of spraying through hoses from 1" to 1 1/2" (25 to 38mm) inside diameter.

SOVE (Electric Version) uses an electric motor to rotate the machine's feed bowl. (Air required to convey material)

Made in the U.S.A. with the highest quality components and craftsmanship, REED has offered the most rugged and reliable Gunite Machines on the market for nearly 60 years.

Standard Features:

- Direct Drive 5HP Air Motor (SOVA)
- Continuous Feed Hopper
- Bag Breaker Included
- 2 Blade Material Agitator
- Direct Drive 3HP Electric Motor (SOVE)
- 3 Phase, 50Hz or 60Hz, 220/230v, 380/400v, 440/460v available

Optional Features:

- Oversized Water Separator
- Automatic Pad Clamp (209 model)
- Dust Suppression System
- Skid Mounting
- Hydraulic Drive



SOVE model above requires 90cfm less compressed air than SOVA

SOVA *Guncrete* GUNITE MACHINE

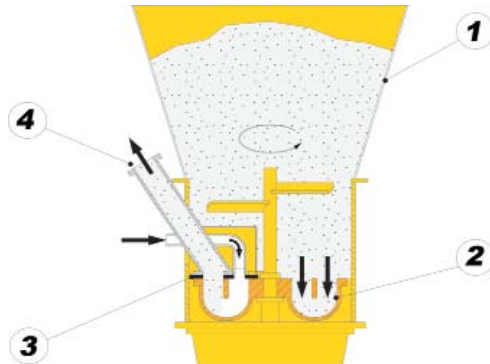
Air Driven Dry-Mix Shotcrete Machine

SOVA CONFIGURATIONS- Small Open Vertical-Feed Air Powered

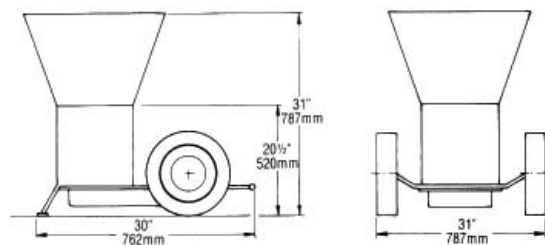
Feed Bowl #Pockets	Hose Size (I.D.)	Maximum Aggregate Size	Air Compressor (Recommended size at 100 psi)	Maximum Output**	Common Applications
1 18	1" (2.5cm)	1/4" (7mm)	210 cfm (6.0m ³ /min)	2yd ³ /hr (1.5m ³ /hr)	Fine, detailed artistic-type work, rockscaping, patch repair
2 18	1 1/4" (3.2cm)	1/4" (7mm)	315-375 cfm (9-11m ³ /min)	4yd ³ /hr (3m ³ /hr)	Refractory spraying, repair work, smooth finish
3 16	1 1/4" (3.2cm)	1/4" (7mm)	315-375 cfm (9-11m ³ /min)	6yd ³ /hr (4.6m ³ /hr)	Refractory spraying, repair work, smooth finish
4 16	1 1/2" (3.8cm)	3/8" (10mm)	315-375 cfm (9-11m ³ /min)	9yd ³ /hr (6.9m ³ /hr)	Refractory spraying, repair work, smooth finish

* Subtract roughly 90 SCFM (2.5M/MIN) from air requirement if SOVE (electric) model is used. Additional air may be required depending on altitude and atmospheric pressure.

Operating Principle:



1. The dry material is fed through the hopper down into the pockets of the rotary feed wheel below.
2. The rotary feed wheel, driven by a heavy-duty oil bath gear drive, rotates the mix under the conveying air inlet and material outlet.
3. With the introduction of compressed air, the mix is evacuated from the feed wheel pockets, then traveling through the outlet and into the hoses.
4. The dry mix material is then conveyed in suspension through hoses to the nozzle, where water is introduced and the water and dry material mix.



SOVA Dimensions Shown Above (SOVE Dimensions vary)

MODEL	SOVA /SOVE
Maximum Horizontal Conveying Distance	ft 1000+ m 305+
Maximum Vertical Conveying Distance	ft 300+ m 91+
Drive System	SOVA 5 hp Air Motor, Direct Spur Gear Drive SOVE 3 hp Electric Motor, Direct Spur Gear Drive
Hopper Style - Continuous Feed, Flat Refractory-style	
Gross Weight (Approx.)	SOVA 455 lb SOVE 660 lb 206 kg 300 kg

Maximum theoretical performance shown above. Actual performance will vary depending on slump, mix design and delivery line diameter. Specifications subject to change without prior notice.

Genuine **REED** Quality